



SUPPORT OUR MISSION



Expanding our services and upgrading our facility to create a greater impact to *change the outlook* for teen parent families.



**A safe place for teen parents,
their babies, and the community.**

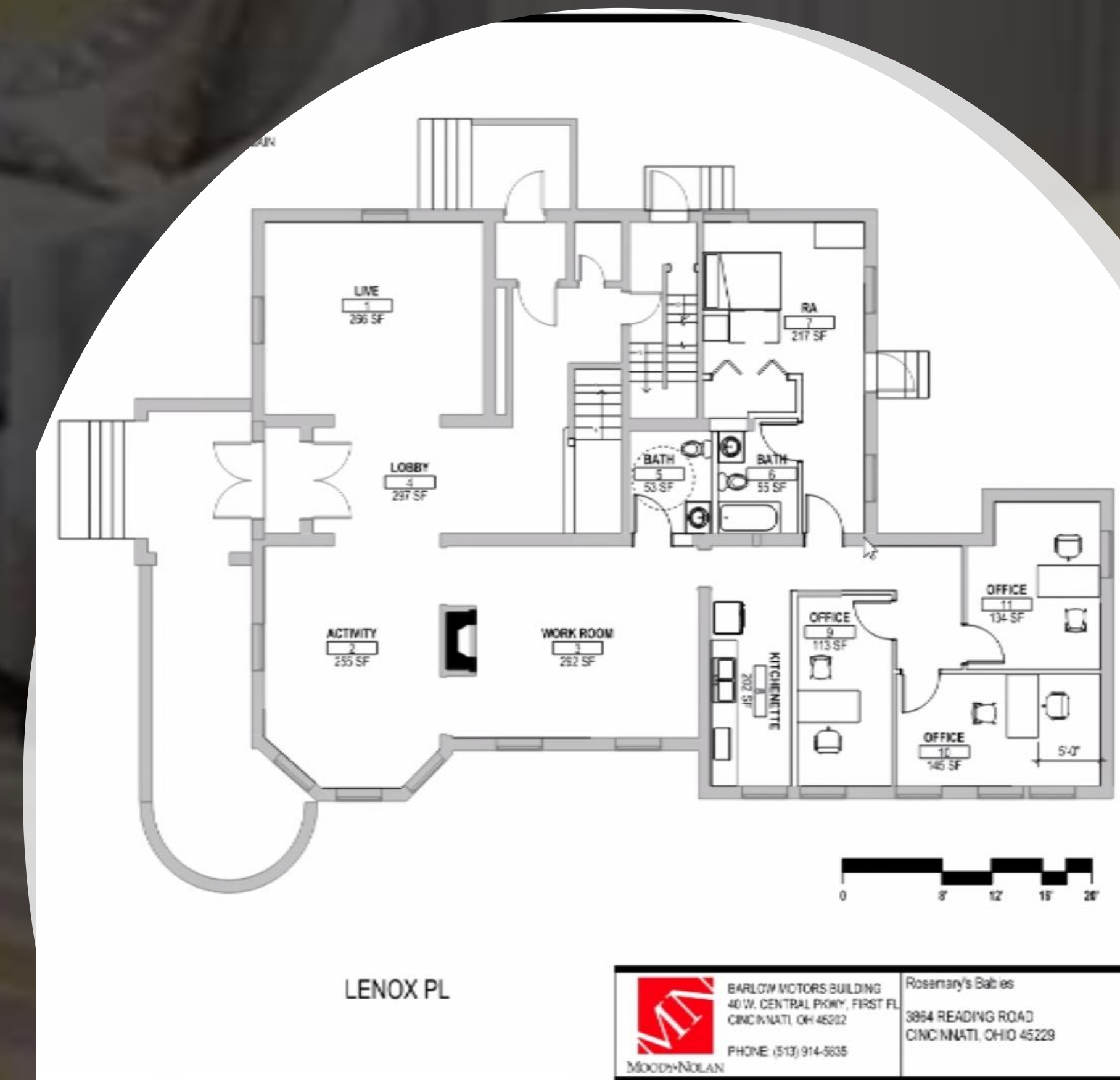


1st Floor Resource Hub

- Entryway w/ GCF Legacy Wall
- Livingroom area w/ Library
- Levi's Learning Area
- STEM Lab
- Kitchenette
- 3 Private Offices
- ½ Bathroom
- 1 Full Bedroom w/bathroom

OPPORTUNITIES TO

- **DONATE**
- **PROVIDE IN-KIND SUPPORT**
- **Naming Rights**



2nd Floor Residential Area

- Living area (101sq ft): Play/learning area for baby, chair for breast feeding, shelves (books & toys)
- 7-Bedrooms
- Dining/Multi-use
- 2 - Full Bathrooms
- Full Kitchen
- Stairwell : Specialty Light (Wall or ceiling)

OPPORTUNITIES TO

- **DONATE**
- **PROVIDE IN-KIND SUPPORT**
- **Naming Rights**





Donor Recognition Opportunities*



Copper Leaves
\$1,000



Silver Leaves
\$2,500



Rose-Gold Leaves
\$5,000



Gold Leaves
\$10,000



Bedrock
\$25,000



Cornerstone
\$50,000

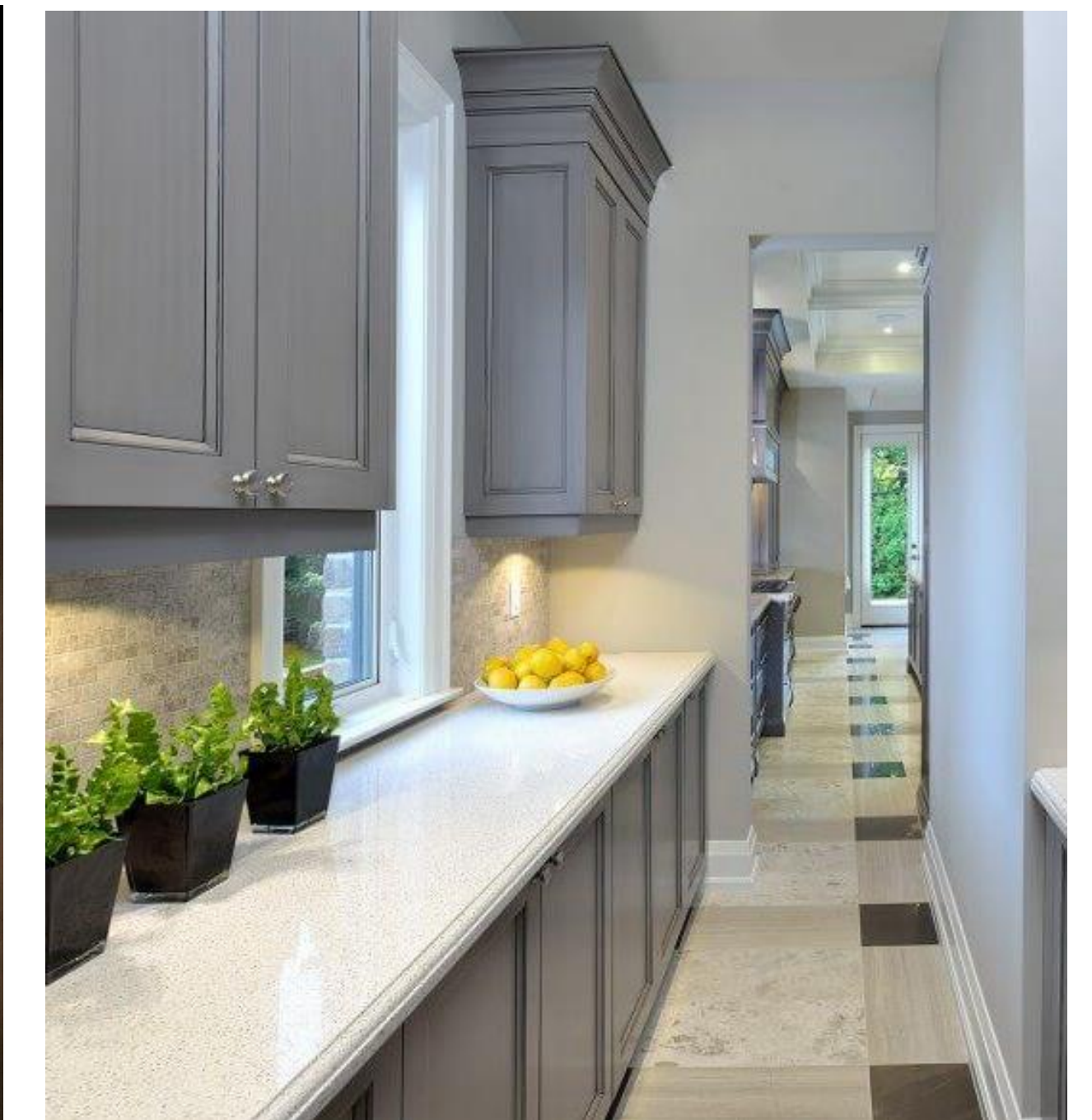
*Final design to be determined

HOLLOWAY HOUSE
LEGACY WALL
EST. 2022



First Floor | Kitchenette & 2nd floor | Full kitchen

Commercial Kitchens w/ appliances for our babies to learn to cook goodies from our garden

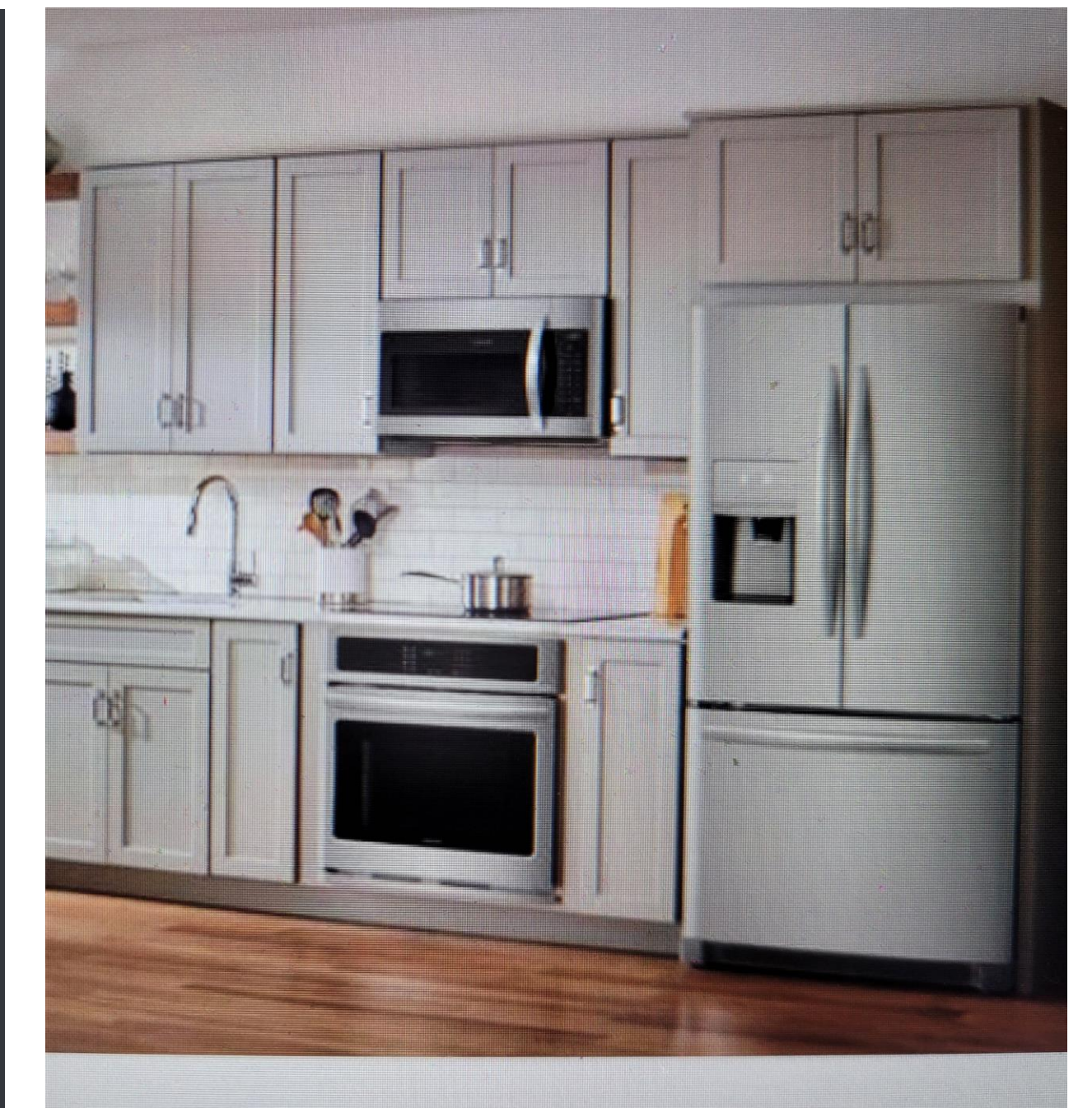


DONATE: Appliances, cabinetry, kitchen utensils, cutlery

IN-KIND SERVICES: Electrical, flooring, labor, painting

NAMING RIGHTS

A generous pledge of \$25,000+



Tech Lab/Multi-use Space

Our two labs will have state-of-the-art technology equipment for all ages i.e. 3D printers, simulators, white boards, podcast equipment, MAC Computers. This shared space will be for both our babies and the community.

We will have a lab you can generously support on both the first and second floors.

DONATE: Computers, Printers, white boards, supplies, furnishings

IN-KIND SERVICES: Electrical, flooring, labor, painting

NAMING RIGHTS

A generous pledge of \$55,000

